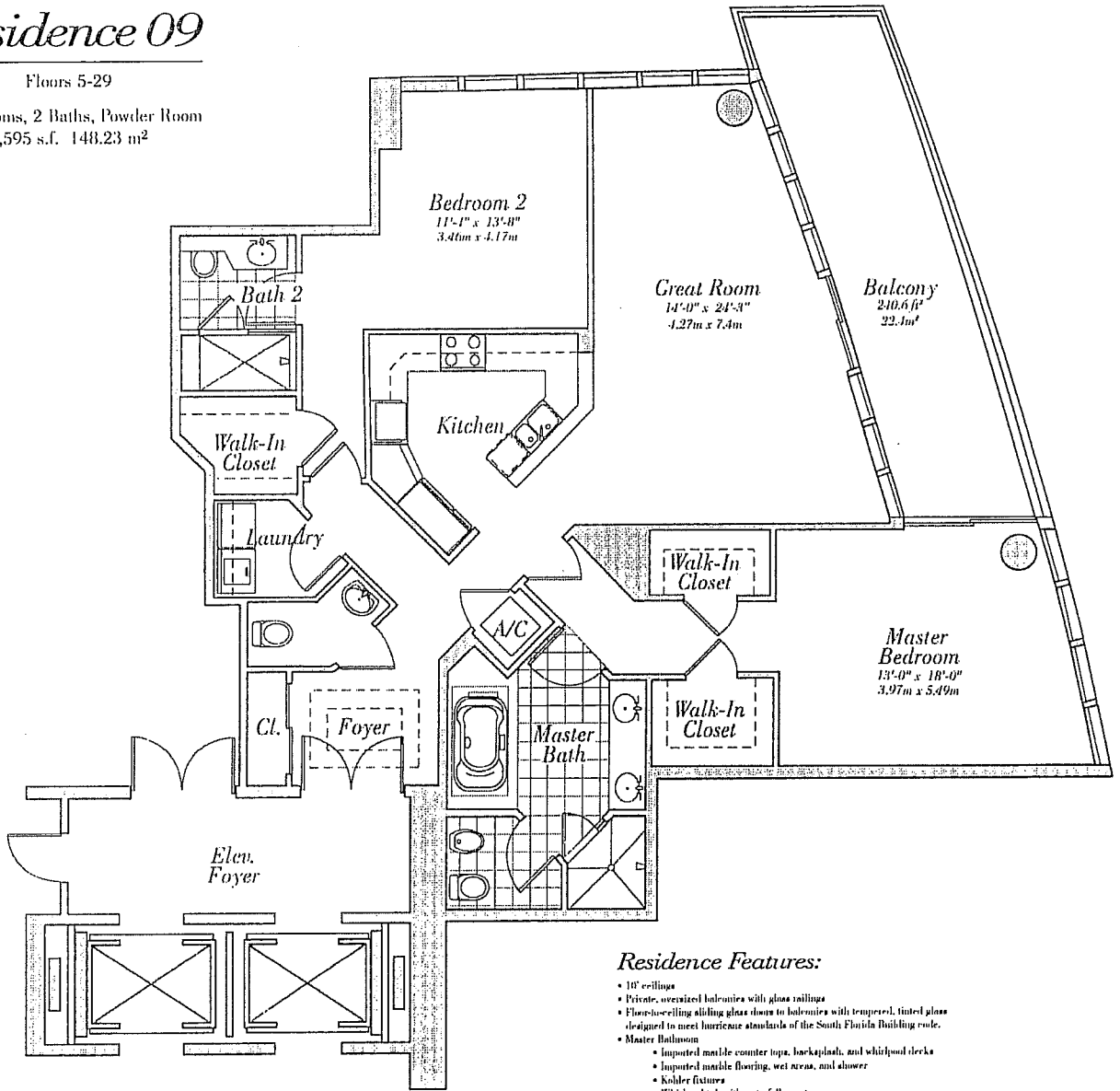


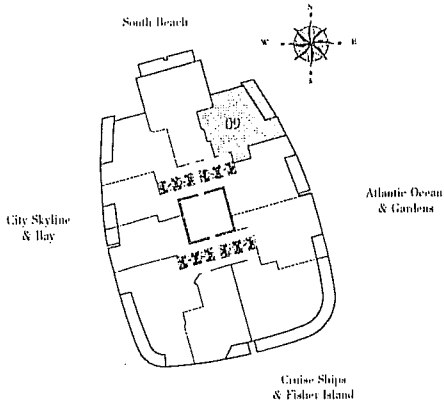
Residence 09

Floors 5-29
 2 Bedrooms, 2 Baths, Powder Room
 1,595 s.f. 148.23 m²



Residence Features:

- 10' ceilings
- Private, oversized balconies with glass railings
- Floor-to-ceiling sliding glass doors to balconies with tempered, tinted glass designed to meet hurricane standards of the South Florida Building code.
- Master Bathroom
 - Imported marble counter tops, backsplash, and whirlpool decks
 - Imported marble flooring, wet areas, and shower
 - Kohler fixtures
 - Whirlpool tub with waterfall spout
 - European bathroom vanity cabinets with high-gloss finish
 - Seamless glass shower doors
 - Full length mirror
- Second Bathroom
 - Imported marble floor, wet areas, and shower
 - Imported marble tops and backsplash
 - European bathroom vanity cabinets with high-gloss finish
 - Glass enclosure for shower stalls
- Powder Room
 - Kohler fixtures
 - Pedestal sink
- Kitchen
 - Custom, imported European cabinetry
 - Granite countertop and backsplash
 - Under-counter lighting
 - Variable speed, recirculating range hood
 - Sub-zero 41" built-in refrigerator-freezer
 - Miele touch-control cooktop
 - Miele electric convection oven
 - Miele integrated dishwasher
 - KitchenAid full-size microwave oven
 - Wine chiller in select residences
 - Single-lever faucet with pull-out spray
- Laundry
 - Maytag Neptune front-load washer
 - Maytag Neptune front load electric dryer
- Pre-wiring for multiple telephone lines
- Pre-wiring for security systems
- Pre-wiring for cable TV
- 8-ft solid-core wood entry doors
- Solid-core wood interior doors



CONTINUUM
 ON SOUTH BEACH