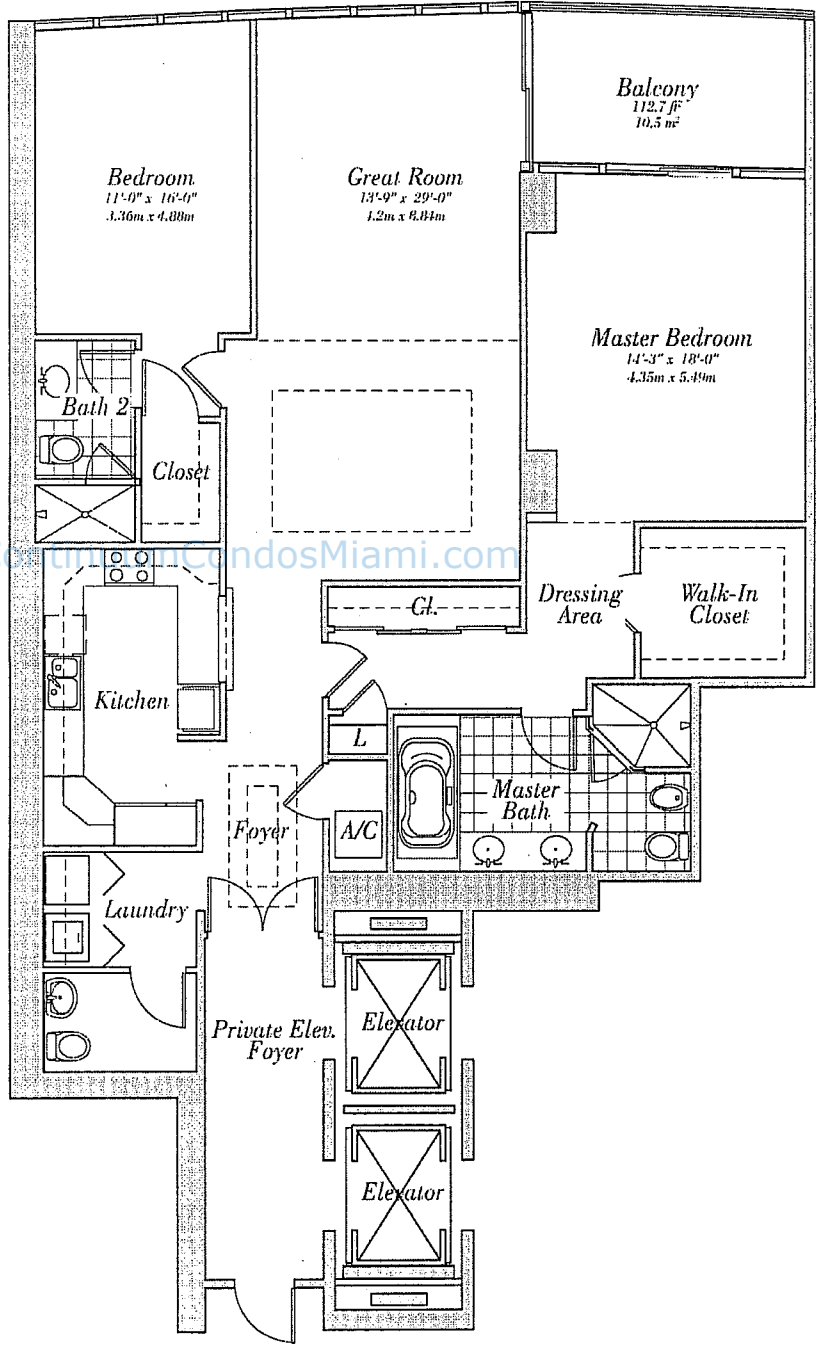


# Residence 07

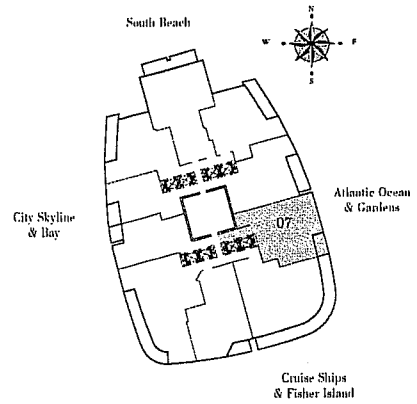
Floors 5-35

2 Bedrooms, 2 Baths, Powder Room  
1,870 s.f. 173.8 m<sup>2</sup>



## Residence Features:

- 10' ceilings
- Private, oversized balconies with glass railings
- Floor-to-ceiling sliding glass doors to balconies with tempered, tinted glass designed to meet hurricane standards of the South Florida Building code.
- Master Bathroom
  - Imported marble counter tops, backsplash, and whirlpool decks
  - Imported marble flooring, wet areas, and shower
  - Kohler fixtures
  - Whirlpool tub with waterfall spout
  - European bathroom vanity cabinets with high-gloss finish
  - Seamless glass shower doors
  - Full length mirror
- Second Bathroom
  - Imported marble floor, wet areas, and shower
  - Imported marble tops and backsplash
  - European bathroom vanity cabinets with high-gloss finish
  - Glass enclosure for shower stalls
- Powder Room
  - Kohler fixtures
  - Pedestal sink
- Kitchen
  - Custom, imported European cabinetry
  - Granite countertops and backsplash
  - Under-counter lighting
  - Variable speed, recirculating range hood
  - Sub-zero 40" built-in refrigerator-freezer
  - Miele touch-control cooktop
  - Miele electric conventional oven
  - Miele integrated dishwasher
  - KitchenAid full-size microwave oven
  - Wine chiller in select residences
  - Single-lever faucet with pull-out spray
- Laundry
  - Maytag Neptune front-load washer
  - Maytag Neptune front load electric dryer
- Pre-wiring for multiple telephone lines
- Pre-wiring for security systems
- Pre-wiring for cable-TV
- 8-ft solid-core wood entry doors
- Solid-core wood interior doors



**CONTINUUM**  
ON SOUTH BEACH